

Computing Reachable Sets of Semi-Discrete Solid Dynamics Equations with ReachabilityAnalysis.jl

Jorge M. Pérez Zerpa¹, Marcelo Forets², and Daniel Freire Caporale³

¹Instituto de Estructuras y Transporte, Facultad de Ingeniería, UdelaR, Montevideo, Uruguay

²Depto. de Matemática y Aplicaciones, CURE, UdelaR, Maldonado, Uruguay

³Instituto de Física, Facultad de Ciencias, UdelaR, Montevideo, Uruguay

The Set-Based Approach. Many real-world problems require the resolution of ODEs with uncertainties in initial conditions or in applied loads. Obtaining solutions considering these uncertainties is a challenging task, particularly in large scale systems. The set-based approach consists in the construction of sets that contain all the feasible solutions of the ODEs [1].

Solid Dynamics ODEs. In applications such as wave propagation or structural vibrations, solid dynamics problems are formulated. In these cases, large systems of ODEs of the form

$$\mathbf{M}\mathbf{x}''(t) + \mathbf{C}\mathbf{x}'(t) + \mathbf{K}\mathbf{x}(t) = \mathbf{F}(t) \quad (1)$$

are formulated using the Finite-Element Method (FEM) [3], where $\mathbf{x} \in \mathbb{R}^n$ is the displacements (or state) vector, and \mathbf{M} , \mathbf{C} and \mathbf{K} are the mass, damping and stiffness matrices, respectively. Depending on the problem, n is typically between 10^2 and 10^5 .

Set-Based Solid Dynamics. When uncertainty is present, the initial displacements $\mathbf{x}(0)$ and the initial velocities $\mathbf{x}'(0)$ belong to the feasible sets \mathcal{X}_0 and \mathcal{V}_0 , respectively. In [6] a novel approach for time integration of solid dynamics equations based on set-based techniques was presented. The approach allows to compute, in a single integration, the solution sets (or *flowpipes*) that include all exact trajectories under uncertainties in the initial conditions and applied loads. Such solution sets cannot be obtained using standard numerical integrators, since they are designed to propagate initial points, not sets.

Set-Based FEM Implementation and Application. We have extended the package `ReachabilityAnalysis.jl`[7] to support the set-based approach for solid dynamics. Moreover, through a simple interface, it can be integrated with FEM tools such as `ONSAS` [10]. The implementations developed can be used to solve large systems, however, a minimal problem was chosen to illustrate its use. The spring-mass system shown in Fig. 1, loaded with a Heaviside step function with uncertainties in load and initial conditions, can be easily modeled and solved using the code shown below. The resulting solutions sets are shown in Fig. 2 together with random simulations results.

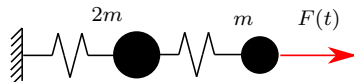


Fig. 1: Diagram of two degrees of freedom and Rayleigh damping.

```

1 using ReachabilityAnalysis
2 m = 0.25; k = 2.0
3 M = [2m 0; 0 m]; K = [2k -k; -k k]; C = (M+K)/20
4 F = [0.0, 1.0]; ΔF0 = Interval(0.9, 1.1)
5 U0 = BallInf(zeros(4), 0.5)
6 sys = SecondOrderLinearContinuousSystem(M, C, K, F)
7 prob = InitialValueProblem(homogenize(sys), U0 × ΔF0)
8 solA = solve(prob, 50, LGG09(δ=5e-2, dirs=:box, dim=5))
9 solB = solve(prob, 50, LGG09(δ=5e-2, dirs=:oct, dim=5))

```

Perspectives. We envision modeling uncertainties in density or stiffness using interval methods [5, 8], as well as integrating our work with Julia's FEM projects [2, 4, 9].

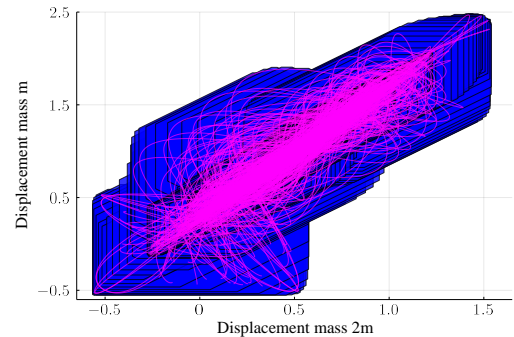
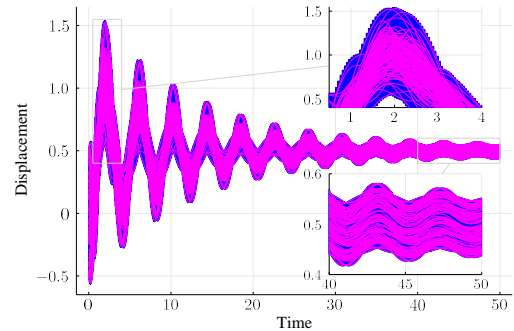


Fig. 2: Solution sets of mass $2m$ vs time (top) and displacement of both masses (bottom).

References

- [1] Matthias Althoff, Goran Frehse, and Antoine Girard. Set propagation techniques for reachability analysis. *Annual Review of Control, Robotics, and Autonomous Systems*, 4, 2020. doi:10.1146/annurev-control-071420-081941.
- [2] Santiago Badia and Francesc Verdugo. Gridap: An extensible finite element toolbox in julia. *Journal of Open Source Software*, 5(52):2520, 2020. doi:10.21105/joss.02520.
- [3] Klaus-Jürgen Bathe. *Finite Element Procedures*. Watertown, USA, 2 edition, 2014.
- [4] Kristoffer Carlsson, Fredrik Ekre, and Contributors. Ferrite.jl. <https://github.com/Ferrite-FEM/Ferrite.jl>, 3 2021.
- [5] Luca Feranti, Marcelo Forets, and David P. Sanders. IntervalLinearAlgebra.jl: linear algebra done rigorously, 9 2021. doi:10.5281/zenodo.5363563.
- [6] Marcelo Forets, Daniel Freire Caporale, and Jorge M. Pérez Zerpa. Combining set propagation with finite element methods for time integration in transient solid mechanics problems. *Computers & Structures*, 259:106699, 2022. doi:10.1016/j.compstruc.2021.106699.
- [7] Marcelo Forets, Christian Schilling, Luis Benet, and Contributors. ReachabilityAnalysis.jl. <https://github.com/JuliaReach/ReachabilityAnalysis.jl>, 1 2022.
- [8] Marcelo Forets, Christian Schilling, and Luca Feranti. Intervalmatrices.jl: Matrices with interval coefficients in julia, 9 2021. doi:10.5281/zenodo.5516249.
- [9] Petr Krysl and Contributors. FinEtools.jl. <https://github.com/PetrKryslUCSD/FinEtools.jl>, 10 2021.
- [10] Jorge M. Pérez Zerpa, Juan Bruno Bazzano García, Joaquin Viera Sosa, Mauricio Vanzulli Pena, Marcelo Forets, Jean-Marc Battini, and Sebastián Toro. ONSAS.m: an Open Nonlinear Structural Analysis Solver for GNU-Octave/Matlab. <https://github.com/ONSAS/ONSAS.m/>. doi:10.5281/zenodo.5885614.